

**Carli Suspension**  
422 Jenks Circle,  
Corona, CA 92880



**Tech Support:**  
888-99-CARLI  
(888) 992-2754

## **CS-DRPRBDROP-14**

### **NOTE:**

---

We Recommend installation be performed by a trained professional. Please review the product instructions prior to attempting installation to ensure installer is equipped with all tools and capabilities necessary to complete the product installation. We recommend thoroughly reading the instructions at least twice prior to attempting Installation.

Before beginning disassembly of the vehicle, check the "What's Included" section of the instructions to ensure you've received all parts necessary to complete installation. Further, verify that the parts received are PROPER TO YOUR application (year range, motor, etc.) to avoid potential down-time in correcting potential discrepancies. Any discrepancies will be handled by Carli Suspension and the correcting products will be shipped UPS Ground.

### **LIFETIME PRODUCT WARRANTY**

---

Carli Suspension provides a limited lifetime product warranty against defects in workmanship and materials from date of purchase to the original purchaser for all products produced by Carli Suspension. Parts not manufactured by, but made to Carli Suspension's specifications by third party manufacturers will carry a warranty through their respective manufacturer. (i.e. King Shocks, Bilstein Shocks, Fox Shocks). Deaver Leaf Spring's warranty will be processed by Carli Suspension.

Proof of purchase (from the original purchaser only) will be required to process any warranty claims. Carli Suspension products must be purchased for the listed Retail Price reflected by the price listed on the Carli Suspension Website at the time of purchase. Carli Suspension reserves the right to refuse warranty claims made by any customer refusing or unable to present proof of purchase, or presenting proof of purchase reflecting a price lower than Carli Suspension's Retail Price at the time the item was purchased.

Carli Suspension's Limited Lifetime Warranty excludes the following parts which are subject to wear: Track Bar Bushings, Track Bar Heim Joints, Limit Straps, Control Arm Bushings, Radius Arm Bushings, Shock Bushings, Sway Bar End Link Heim Joints, Shock Seals, Shock Bearings, and Corrosion on Shock Shafts or Bodies. These items will be warranted for a period of 60 days from the date of purchase only if determined to be installed properly signifying manufacturing defect. Carli Suspension cannot warrant a product's cosmetic finish due to the varying extreme elements that may be encountered.

Any alterations, modifications, or improper installation, of the product will void this warranty. Products should be inspected for defect upon receipt and approved before installation. Any defect in NEW product will be warranted if returned before installation in its original packaging. Carli Suspension's obligation under this warranty is limited to the repair or replacement of the defective product only. All costs of removal, installation or reinstallation, freight charges, incidental or consequential damage are expressly excluded from this warranty.

Carli Suspension is not responsible for damages and/or warranty of other vehicle parts related or non-related to the installed Carli Suspension product. This warranty shall not apply to any product that has been subjected to accident, negligence, alteration, abuse or misuse as determined by Carli Suspension. Carli Suspension reserves the right to refuse warranty claims if produced parts are combined and/or substituted with other aftermarket suspension products. Combination and/or substitution of other aftermarket suspension components may cause premature wear and/or product failure. Carli Suspension reserves the right to change/alter product without obligation to update any previously purchased products.

## What's Included

---

- (Qty. 1) Rear Track Bar Drop Bracket
- (Qty. 4) ½" Bolts
- (Qty. 8) ½" flat washers
- (Qty. 4) ½" C-loc nuts
- (Qty. 1) M12 bolt
- (Qty. 1) M12 washer
- (Qty. 1) M12 c-lock nut

## Special Notes

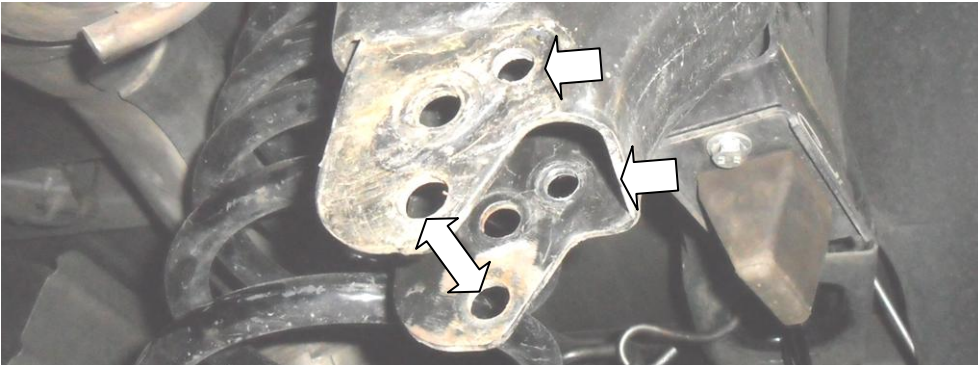
---

- This installation can be done on the ground or with the rear suspended; this will depend on the preference of the installer.
- **If installation is done on a lift or with the rear suspended, final torquing will need to be done after the truck has been lowered to ride height and the suspension is loaded to ensure no damage to the factory track bar's vulcanized bushings.**
- Removal of the rearmost section of your factory exhaust will be necessary if the installer does not have access to a right angle drill and SHORT ½" bit.

## Instructions

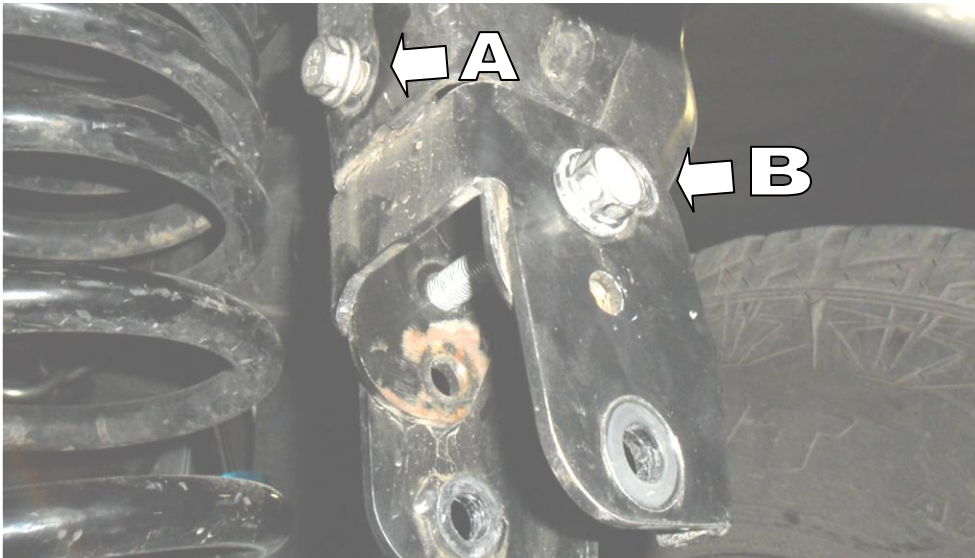
---

1. Remove factory frame side (upper) track bar bolt and pull the bar out from the upper mount.

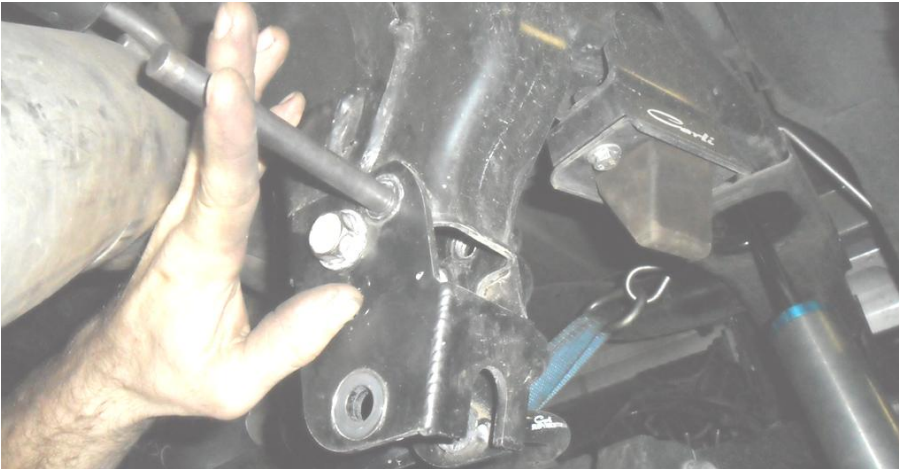


**NOTE:** These instructions were completed on our prototype Truck. The holes referenced by the above arrows were drilled prior to the instructions being made. Instructions on where and how to drill these holes will be found later in the instructions.

2. Remove the Driver's side bolt and remove the rear track bar from the truck.
3. Fit the track bar drop bracket around the factory mount on upper, frame side mounting location. The top part of the bracket will go **INSIDE** the factory bracket and the rest of the bracket is placed around the factory bracket, sandwiching it. Use a mallet to ensure the bracket is bottomed out on the factory bracket.
4. Insert the supplied M12 bolt in the factory hole on the inside of the factory bracket (A). The insert the bolt through the factory hole and affix the washer and C-Lock nut to the inside. Insert the factory bolt back into the slotted hole and thread on the factory nut (B).

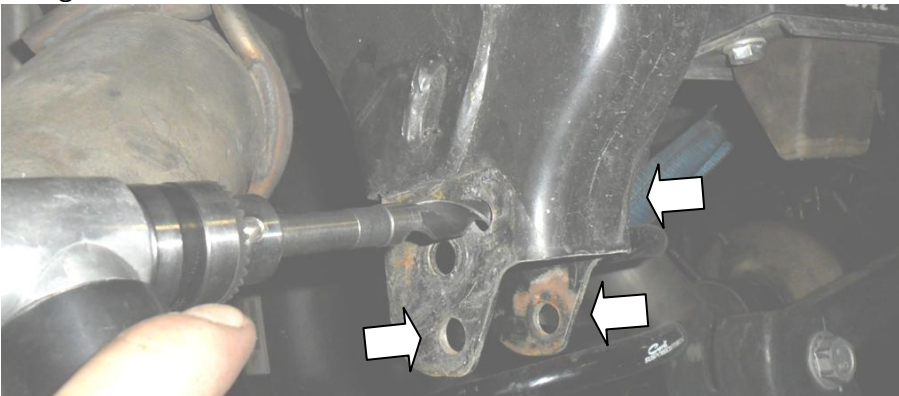


5. Tighten the factory bolt and the M12 bolt. This will index the bracket while marking the ½" holes above and below the factory bolt hole for drilling.
6. Using a ½" center punch, mark the center of the hole above, to the right and directly below the factory bolt. Mark these holes on both the front and back of the bracket as both sides will be secured by the provided ½" hardware.



**NOTE:** There is one hole to be marked being shown by the location of the center-punch in the above picture. The second hole is below the installer's thumb and 3<sup>rd</sup>/4<sup>th</sup> are on the back of the bracket.

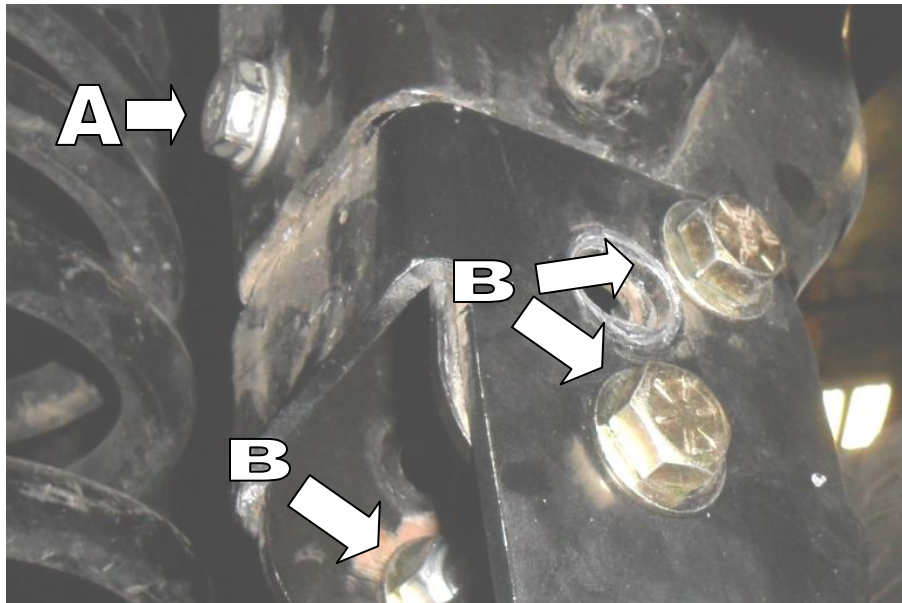
7. Remove the Carli Track bar bracket by removing the factory bolt and M12 bolt to access the center-punched holes for drilling.



**NOTE:** This Step is MUCH easier without the rear coils installed and if you remove the rearmost section of your factory exhaust. To remove your factory exhaust, pry the rearmost exhaust hanger out of the rubber support and loosen the 15mm factory bolt that clamps the exhaust. If you muscle it, you can break the junction free and remove it; we just spun it out of the way as pictured.



8. With both 1/2" holes (front and back) drilled, the bracket can now be reinstalled. The M12 (A) bolt should be installed hand-tight first, followed by the provided 1/2" bolts, washers (2 per bolt, one for each side) and nuts in the front and rear 4 drilled holes (B, only three can be referenced in the picture).

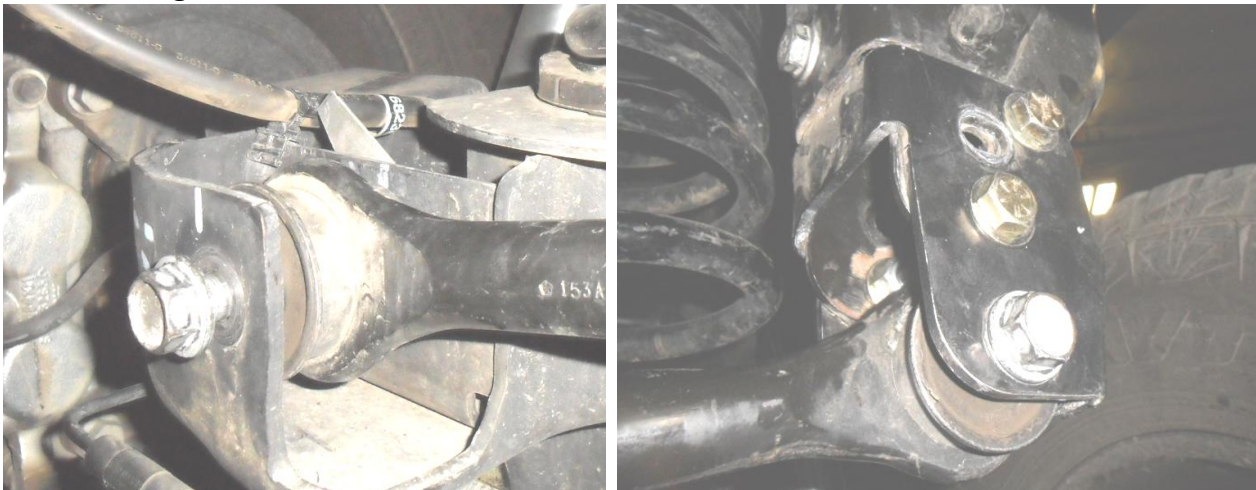


9. Torque the ½" bolts (B) to 75 ft.lbs and the M12 (A) to 60 ft.lbs.

**NOTE:** The factory track bar hole will not be utilized, it was only used to index the drilling of the 4 - ½" holes.

10. Re-install the factory track bar into the lower, Driver's side factory mount and the new, dropped location on the Carli Track Bar Drop using the factory bolts and nuts.

**NOTE:** If the rear end was suspended during installation, leave the factory bolts hand tight until the rear suspension is back at ride height.



11. Drop the truck so the rear end loads and torque the rear, factory bolts to 155 ft.lbs.

